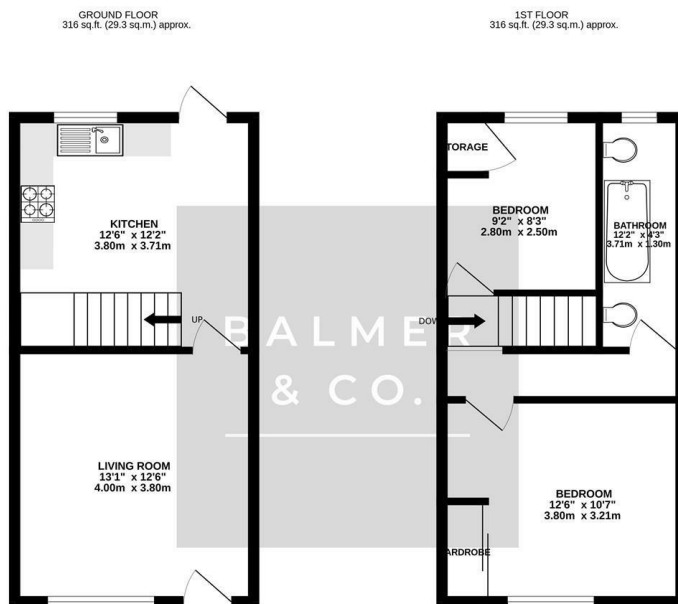


Robinson Street, Bolton, BL6 7NS
£130,000



BALMER & CO are delighted to offer FOR SALE this two bedroom mid terraced property tucked away on Robinson Street in Horwich. Conveniently placed within walking distance of a wide range of amenities it would be a perfect first time buy or investment opportunity. Comprising in brief; living room, fitted kitchen/dining room with an open staircase to the first floor, two bedrooms and a three piece bathroom suite. Externally, on street parking is offered to the front of the property with a enclosed, low maintenance yard to the rear. Early viewings highly recommended, all enquiries welcome.

Floor Plan

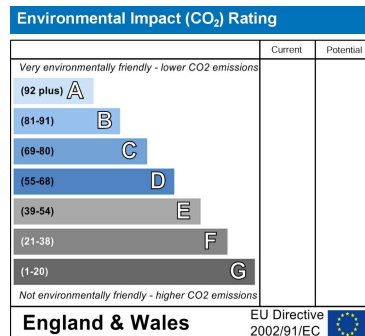
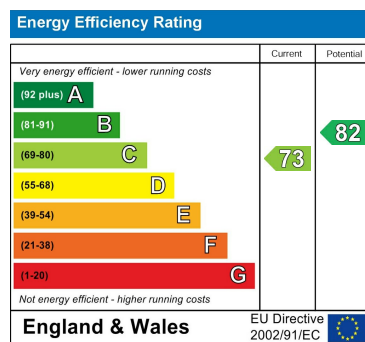


Whilst every attempt has been made to ensure the accuracy of the floorplans contained herein, measurements of plots, windows, doors and any other items are approximate and no responsibility is taken for any errors disclosed in the statements. This plan is for information purposes only and should not be used for any prospective purchase. The services, systems and appliances shown have not been tested and no guarantee is given in their operability or efficiency can be given. Made with Metreplex ©2025

Area Map



Energy Efficiency Graph



These particulars, whilst believed to be accurate are set out as a general outline only for guidance and do not constitute any part of an offer or contract. Intending purchasers should not rely on them as statements of representation of fact, but must satisfy themselves by inspection or otherwise as to their accuracy. No person in this firm's employment has the authority to make or give any representation or warranty in respect of the property.